



Yeastar S412 VoIP PBX

Easy to use, flexible, and feature-rich

Yeastar S412 is a flexible and modular VoIP PBX engineered for the communications needs of small companies. Yeastar S412 can handle up to 4 CO/BRI lines, up to 12 analog extensions, 2 GSM/3G/4G channels, 8 VoIP extensions, and 4 VoIP trunks, delivering exceptional cost savings, productivity, efficiency improvements and peace of mind.

Future-Proof Modular Design

With a unique modular design, the S412 supports 8 fixed FXS ports, and can add 4 extra FXS ports and 4 PSTN or BRI lines depending on the needs. You can also take advantage of a flexible combination of FXS, FXO, BRI, GSM interfaces, and the VoIP capability cost-effectively.

Easy to use Solution

The S412 features fast installation with comprehensive auto provisioning of major IP phone brands, auto-detect and advanced plug and play capability, together with an intuitive Metro UI driven by point-and-click configuration, from any device (smartphone, laptop, PC, tablet).

Mobility

Linkus Mobile Client makes your Android or iOS mobile phone an office extension and links you and your colleagues and customers anywhere anytime with higher security. Ad-hoc conference feature and Visual Voicemail are all supported on Linkus Mobile Client.

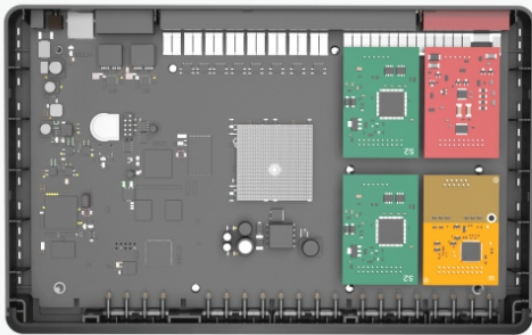
Extending Features with App Center

The S412 also has embedded App Center that gives user easy access to a wealth of S-Series Apps. As an integral part of the S412 Web interface, the App Center allows you to install, upgrade, and manage Apps designed for S412.

Flexible Modular Design

S412 is pre-configured with 8 FXS ports and is customizable with 4 module slots, which brings you flexible combination of FXS, FXO and BRI interfaces.

- 2 module slots for internal extension
- 2 module slots for external lines



B2 Module



O2 Module



S2 Module



GSM Module



3G Module



4G Module



Extending Features with App center

An easy access to a wealth of apps to extend features for your PBX and powers your communication.



S412 Features

- Automated Attendant (IVR)
- Attended Transfer
- Auto Provision IP Phones
- AutoCLIP
- App Center
- Blind Transfer
- Blacklist/Whitelist
- Billing App
- Call Back
- Call Detail Records (CDR)
- Call Forwarding
- Call Monitor
- Call Parking
- Call Pickup
- Call Recording
- Call Routing
- Call Waiting
- Caller ID
- Conference
- Custom Prompt
- Dial by Name
- DISA
- Distinctive Ringtone
- DNIS
- Do Not Disturb (DND)
- Emergency Number
- Event Center
- Email to SMS/SMS to Email
- Fax to Email
- Follow Me
- Hot Standby
- Import/Export Extensions
- Paging/Intercom
- Mobility Extension
- Multi-language System
- Prompt
- Multi-language Web GUI
- Music on Hold
- One Touch Recording
- Queue
- PIN List
- Real-time Status Monitor
- Ring Group
- SIP Forking
- SLA
- Speed Dial
- Time Condition
- User Portal
- User Privileges
- Video Calls
- Voicemail
- Voicemail to Email
- Voicemail Forwarding

S412 Specifications

Capacity

- 8 VoIP Users
- 8 Concurrent Calls
- 4 VoIP Trunks

Interfaces

- 8 Fixed RJ11 FXS Ports
- 4 Customizable FXS RJ11 Ports
- Up to 4 Customizable FXO/BRI RJ11 Ports
- Up to 2 Customizable GSM/3G/4G Channels
- 1 10/100Mbps LAN
- 1 10/100Mbps WAN
- TF Card Slot

App Center

- Linkus Mobile Client
- Auto Provisioning
- LDAP Server
- Conference Panel
- VPN Server
- Billing App
- Hotel App
- char utile h⁺ Integration
- QueueMetrics Live Integration

Voice Processing

- Protocol: SIP, IAX2
- Transport Protocol: UDP, TCP, TLS, SRTP
- DTMF: In-band, RFC4733, SIP INFO
- Codec: G711 (alaw/ulaw), G722, G726, G729A, GSM, Speex, ADPCM, iLBC, H263, H263P, H264, MPEG4

FAX

- T.30 & T.38 Fax
- Fax to Email
- Incoming Fax Tone Detection

Physical

- Size: 290 mm x 180 mm x 33 mm
- Weight: 0.68 kg
- Power Supply: DC 12V 3.33A
- Power Consumption: 9.0-25.6W
- Operation Range: 0°C to 40°C, 32°F to 104°F
- Storage Range: -20°C to 65°C, -4°F to 149°F
- Humidity: 10-90% non-condensing